

LOT Semester 2024C
(01 September - 31 December, 2024)

Education Program:

E01 - Student Training for the 'Fundamentals of Observational Astronomy' Course at NTHU

PI: Shih-Ping Lai (slai@phys.nthu.edu.tw)

E03 - Practical Class of 'Observational Astronomy'

PI: Albert Kong (akong@phys.nthu.edu.tw)

E04 - Advanced Observation Training for Students of TCFSH

PI: Wei-Jie Hou (weij@astro.ncu.edu.tw)

E05 - Spectroscopic Classification and Photometric Analysis of Bright Supernovae

PI: Ting-Wan Chen (twchen@astro.ncu.edu.tw)

Research Program:

(Programs which have international CoIs are marked with *)

*R01 - Lulin Supernova Program

PI: Yen-Chen Pan (ycpan@astro.ncu.edu.tw)

*R02 - RR Lyrae-Based Metallicity and Distance to Selected Ultra-Faint Dwarf Galaxies

PI: Chow-Choong Ngeow (cngeow@astro.ncu.edu.tw)

R03 - Searching for new binary central stars of planetary nebulae

PI: Albert Kong (akong@phys.nthu.edu.tw)

*R05 - Refine the ephemerides of exoplanets for the Ariel Space Telescope

PI: Yen-Hsing Lin (julius52700@gmail.com)

*R06 - Gold factories in the Universe: discovering and understanding the nature of kilonovae (ToO)

PI: Ting-Wan Chen (twchen@astro.ncu.edu.tw)

*R07 - Extending the photometric monitoring of superluminous supernovae to late phases (partial ToO)

PI: Aiswarya Sankar.K (d1129601@gm.astro.ncu.edu.tw)

R08 - Spectral Types Identity of the Flaring Eclipsing Binary Components

PI: Li-Ching Huang (lchuang@ntnu.edu.tw)

*R09 - Optical Follow-up of the Einstein Probe Discovered Fast X-ray Transients (ToO)

PI: Amar Aryan (amar@astro.ncu.edu.tw)

R10 - Characterizing Mercury's Sodium Exosphere

PI: Chen-Yen Hsu (pandaangela915@gmail.com)

- *R11 - LOT follow-up of transient events and new discovery objects from ZTF (ToO)
PI: Zhong-Yi Lin (zylin@astro.ncu.edu.tw)

- R12 - The study of the dust to gas ratio and rotation in long- and short-period comets
PI: Zhong-Yi Lin (zylin@astro.ncu.edu.tw)

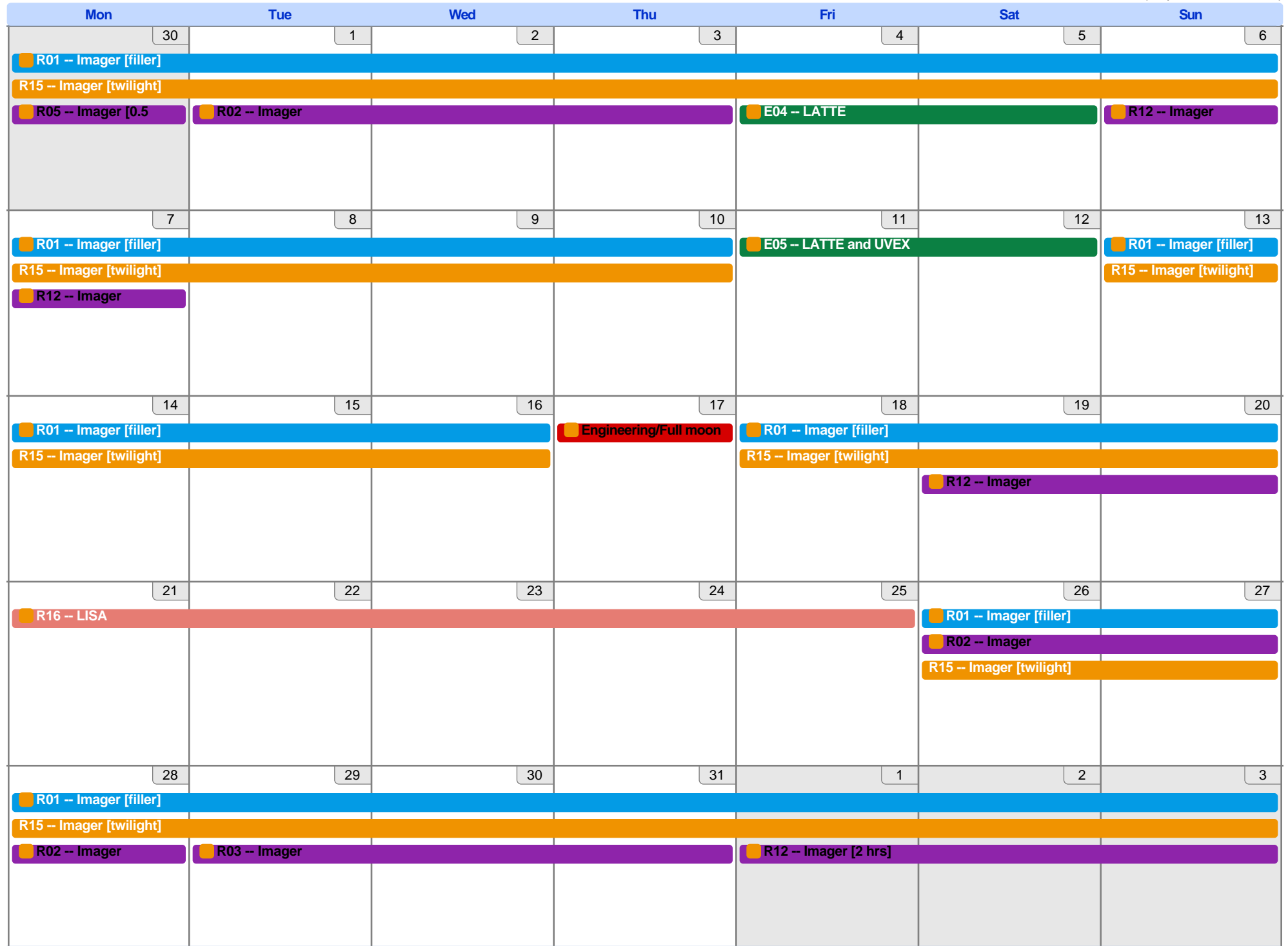
- R13 - Chromospheric Activity of Flaring M Type Eclipsing Binaries
PI: Li-Ching Huang (lchuang@ntnu.edu.tw)

- R14 - Probing the accretion stability of Herbig Ae/Be star
PI: Jyun-Heng Lin (41141905S@gapps.ntnu.edu.tw)

- R15 - Lulin Twilight Comet Survey (partial ToO)
PI: Yu-Chi Cheng (ycc312@g.ncu.edu.tw)

- R16 - Spectroscopic Survey on Themis Asteroids
PI: Yu-Chi Cheng (ycc312@g.ncu.edu.tw)

Mon	Tue	Wed	Thu	Fri	Sat	Sun
26	27	28	29	30	31	1
<div style="display: flex; justify-content: flex-end; gap: 5px;"> R01 -- Imager [filler] R03 -- Imager R15 -- Imager [twilight] </div>						
2	3	4	5	6	7	8
<div style="display: flex; justify-content: space-between;"> R01 -- Imager [filler] R03 -- Imager R02 -- Imager R12 -- Imager R05 -- Imager [0.5] </div>						
9	10	11	12	13	14	15
<div style="display: flex; justify-content: space-between;"> R01 -- Imager [filler] R15 -- Imager [twilight] </div>						
16	17	18	19	20	21	22
<div style="display: flex; justify-content: space-between;"> R01 -- Imager [filler] R15 -- Imager [twilight] R05 -- Imager [0.5] </div>						
23	24	25	26	27	28	29
<div style="display: flex; justify-content: space-between;"> R01 -- Imager [filler] R15 -- Imager [twilight] R12 -- Imager R03 -- Imager </div>						
30	1	2	3	4	5	6
<div style="display: flex; justify-content: space-between;"> R01 -- Imager [filler] R15 -- Imager [twilight] R05 -- Imager [0.5] R02 -- Imager E04 -- LATTE R12 -- Imager </div>						



Mon		Tue		Wed		Thu		Fri		Sat		Sun	
28		29		30		31		1		2		3	
R01 -- Imager [filler]													
R15 -- Imager [twilight]													
R02 -- Imager				R03 -- Imager				R12 -- Imager [2 hrs]					
4		5		6		7		8		9		10	
R01 -- Imager [filler]								E03 -- Imager and LISA (or UVEX)				R01 -- Imager [filler]	
R15 -- Imager [twilight]												R02 -- Imager	
R12 -- Imager [2 hrs]				R02 -- Imager				R15 -- Imager [twilight]					
11		12		13		14		15		16		17	
R01 -- Imager [filler]								E01 -- Imager and LATTE				R08 -- UVEX	
R15 -- Imager [twilight]												R10 -- UVEX	
R02 -- Imager				R12 -- Imager				R13 -- UVEX					
18		19		20		21		22		23		24	
R08 -- UVEX				R01 -- Imager [filler]				R15 -- Imager [twilight]					
R10 -- UVEX								R02 -- Imager					
R13 -- UVEX													
25		26		27		28		29		30		1	
R01 -- Imager [filler]													
R15 -- Imager [twilight]													
R02 -- Imager				R12 -- Imager								R02 -- Imager	

Mon	Tue	Wed	Thu	Fri	Sat	Sun
25	26	27	28	29	30	1
R01 -- Imager [filler]						
R15 -- Imager [twilight]						
R02 -- Imager		R12 -- Imager				R02 -- Imager
2	3	4	5	6	7	8
R01 -- Imager [filler]						
R15 -- Imager [twilight]						
R02 -- Imager				R05 -- Imager [0.5]	R02 -- Imager	
9	10	11	12	13	14	15
R16 -- LISA					R01 -- Imager [filler]	Engineering/Full moon
					R15 -- Imager [twilight]	
16	17	18	19	20	21	22
R01 -- Imager [filler]					R08 -- UVEX	
R15 -- Imager [twilight]					R10 -- UVEX	
			R12 -- Imager		R13 -- UVEX	
23	24	25	26	27	28	29
R10 -- UVEX						
R08 -- UVEX			R14 -- UVEX			
R13 -- UVEX						
30	31	1	2	3	4	5
R10 -- UVEX						
R14 -- UVEX						