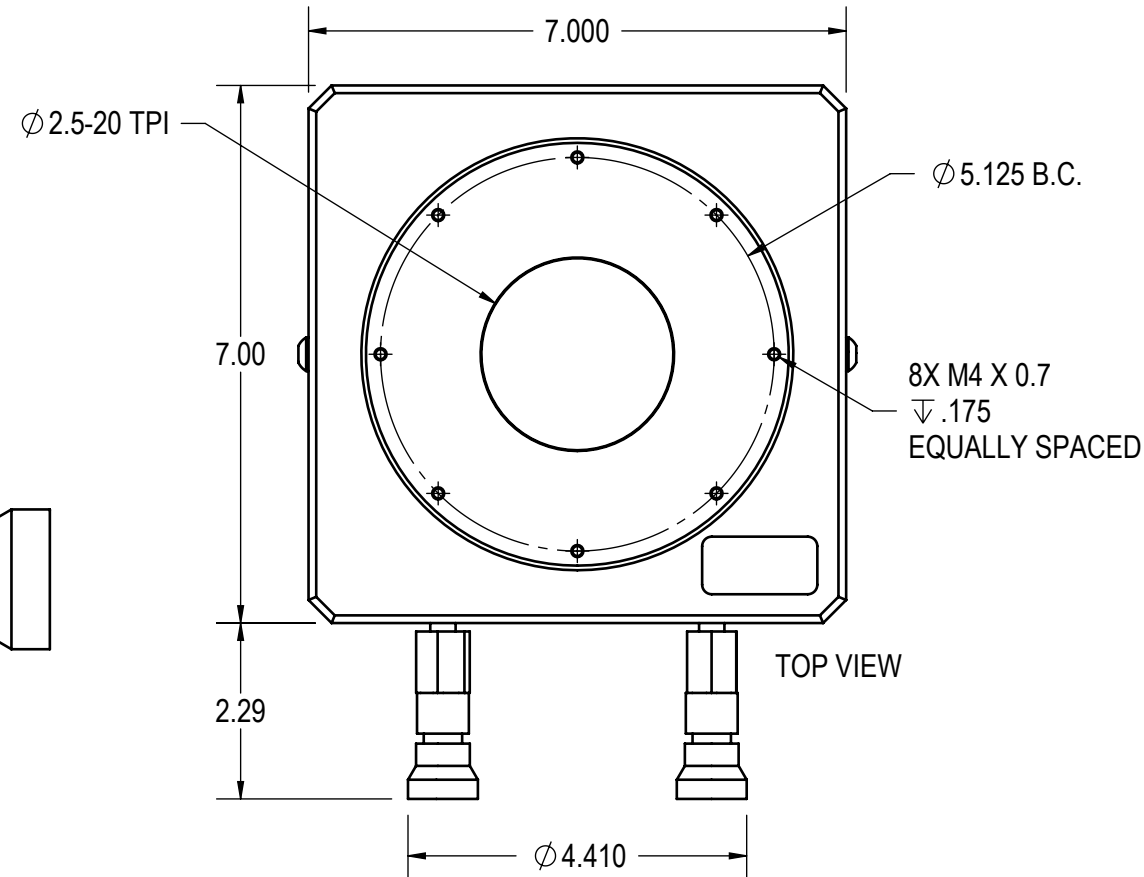




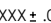


REVISIONS			
REV.	DESCRIPTION	DATE	APPROVED
A	INITIAL PRODUCTION RELEASE	041607	GR



Front view of the USB-1000 module. Dimensions include a total width of $\phi 5.63$, a total height of 3.24, and a central component height of 2.39. The module features a 4X Status LED, Power, Network/USB Interface, I/O Connector, Serial Port 1 & 2, and a Reset Switch (Network Only). A dimension of 5.00 is shown for the central component area.

ENGLISH (IN)	CAMERA MODEL	CCD	MECHANICAL DIMENSION			OPTICALLY CORRECTED		
			A	B	C	A	B	C
OPTIONAL	U16	KAF-16801E	1.400	0.985	0.606	1.363	0.948	0.606
OPTIONAL	U9000	KAF-09000	1.400	0.985	0.606	1.363	0.948	0.606
WORST CASE TOLERANCE STACK-UP (+/-)			0.007	0.015	0.012	0.007	0.015	0.012

METRIC (MM)	CAMERA MODEL	CCD	MECHANICAL DIMENSION			OPTICALLY CORRECTED		
			A	B	C	A	B	C
OPTIONAL	U16	KAF-16801E	35.56	25.02	15.39	34.62	24.08	15.39
OPTIONAL	U9000	KAF-09000	35.56	25.02	15.39	34.62	24.08	15.39
WORST CASE TOLERANCE STACK-UP (+/-)			0.18	0.38	0.30	0.18	0.38	0.30

UNLESS OTHERWISE SPECIFIED DIMENSIONS ARE IN INCHES TOLERANCES ARE: FRACTIONS DECIMALS ANGLES \pm .XX \pm .01 \pm 1° .XXX \pm .005		CAD GENERATED DRAWING, DO NOT MANUALLY UPDATE		 Apogee Instruments Inc		
MATERIAL  FINISH  DO NOT SCALE DRAWING		THIRD ANGLE PROJECTION  		SPECIFICATION, MECHANICAL, ALTA		
			NAME			DATE
		DRAWN	GR			041607
		CHECKED	WB			041607
		ENG				
		MFG				
		QA				
		SIZE B	DWG. NO.	D9LCMG63D-XX	REV. A	
		SCALE 1:2.5		RELEASE DATE	SHEET 1 OF 1	

